

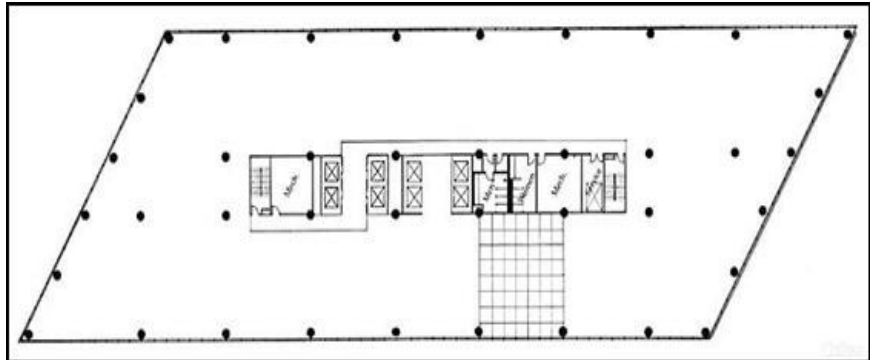
Weslayan Tower



**24 E. Greenway Plaza
Houston, Texas 77046**

Total Building Size:	509,977 sq. ft.
Largest Contiguous Space:	12,786 sq. ft.
Percentage Leased:	90%
Rental Rate:	\$17.00 NNN
2010 Operating Expenses:	\$9.52
TI Allowance:	Negotiable
Term:	3 - 5 Years
Reserved Garage Parking:	\$50.00
Unreserved Garage Parking:	\$35.00

Typical Floor Plate



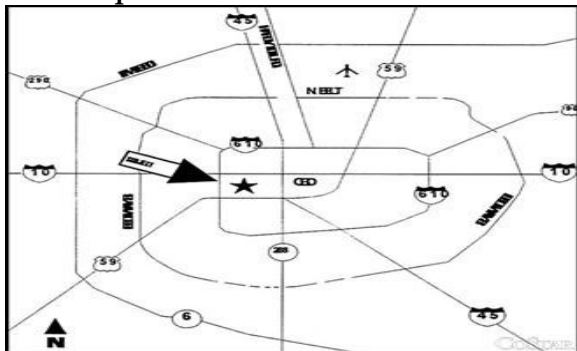
Available Space

SUITE	SQ. FT.	AVAILABLE
400	7,906	Immediately
425	5,986	Immediately
545	2,354	August 2010
555	2,186	Immediately
600	12,786	Sept. 2010
950	4,654	Immediately
1150	4,213	Immediately
1206	2,679	Immediately
1315	3,736	Immediately
1706	6,029	Immediately

Amenities Include:

- CEL "A-list Award" Winner
- On-site management
- On-site Building Engineer
- After hours Cardkey access
- 24 Hr on-site uniformed security
- Energy Star Award Winner
- Easy Access to Freeways/beltway
- On-site Day Porter
- On-site Deli/Catering
- On-site Banking
- On-site Mail Room
- Digital HVAC controls
- Parking Ratio – 3/1000
- Numerous Area Restaurants & Hotels
- On-site Building Conference Room

Location Map



For further information or to schedule a tour, please contact:

Sandy Benak - sbenak@graniteprop.com - 713-781-8000

Rose Herbst - rherbst@graniteprop.com - 713-781-8000

All information contained herein is believed to be accurate but is not warranted as to the accuracy and may be changed or updated without notice.